



TORRISON LLC
STONE & GARDEN

Your Connection To Outdoor Living

Bringing Your
CREATIVE VISION TO LIFE





WHO WE ARE

Torrison Stone & Garden is an award-winning landscape construction company specializing in stone and landscape design, installation and maintenance. Since 2000, we have worked with homeowners across Connecticut to improve upon and create outdoor living spaces that set the bar for the industry.

At Torrison, our goal is to cultivate Customers for Life – built over years of trust in our quality craftsmanship, attention to detail and superior customer service. Thank you for the opportunity to earn this trust!



FAMILY OF SERVICES

We offer complete landscape solutions through our family of services – Stone, Garden and Design. Each division of the company complements and strengthens the others and provides clients with access to a comprehensive catalogue of services.

Torrison is versed in working with a wide variety of materials and can handle jobs that range in scope from simple repairs up to full landscape re-designs. We always consider our clients' needs and priorities thoroughly: the home's design aesthetic, function of the space and materials, long-term maintenance needs, and cost.



Building On Experience

As an industry leader, Torrison's work is expertly designed and carefully installed to stand the test of time. In addition to having years of experience and being one of the largest stonework and landscaping companies in Connecticut, our masons are ICPI certified installers. Torrison Stone & Garden is fully licensed and insured. We enforce and comply with OSHA regulations to increase worksite safety.

Our superior quality craftsmanship can be seen in our:

- 🌿 Patios
- 🌿 Walls
- 🌿 Walkways
- 🌿 Outdoor Kitchens
- 🌿 Fireplaces & Firepits
- 🌿 Steps
- 🌿 Pool Decks
- 🌿 Natural Stone Veneer and more!

Having easy access to quality materials, from bluestone to travertine to pavers, creates an efficiency of workflow unparalleled in the industry. Our nearby stone yard has a healthy inventory of our most popular materials, locally sourced and supplied. We work with the best distributors in the Northeast to deliver the highest quality products to our customers.







Fine Gardening & Maintenance

Thoughtful landscaping changes with the seasons and is designed to look beautiful for years, showcasing your outdoor living areas. Complement your hardscape with the perfect living elements, boost your home's curb appeal or add a new feature to your backyard.

To help you keep your yard and gardens looking their best, Torrison Stone & Garden offers a variety of landscape and fine gardening services and seasonal programs. We can custom tailor our services to meet your landscaping needs.

Services provided by Torrison Garden:

- 🌿 Container Design
- 🌿 Seasonal Landscape Decorating
- 🌿 Lawn & Bed Cleanup
- 🌿 Holiday Decorating
- 🌿 Fine Gardening
- 🌿 Storm & Wind Damage
- 🌿 Mulching
- 🌿 Pruning
- 🌿 Weeding
- 🌿 Edging





LANDSCAPE PLANTINGS 101

Care and Watering Tips

For more helpful tips on caring for your landscape plantings, follow us on social media:

@torrisonstonegarden or check out our website:


torrisonstone.com
To schedule an appointment with a landscape designer, call 860-349-0119.

Watering during the first growing season and through the establishment period that a tree/shrub is planted is crucial for its survival. Here are some tips to give your new plantings a successful beginning.

- Water new plants thoroughly with a heavy, slow soaking, making certain that the soil around the roots is wet. Using a hose with a spray nozzle is not appropriate for watering. Take the nozzle off, turn down the pressure, and allow a slower soaking of the soil around the roots by a trickle of water, avoiding the foliage if possible.



Helpful advice from our crew of professional landscape designers and project managers.

- Larger areas that require sprinklers must have the water distributed in a consistent pattern, for an extended period of time.
- Natural precipitation is not an alternative for the watering of newly installed plants during the first month or two. Temperature affects newly installed plants more than rainfall. During hot periods, plants need more water. Look for wilting or drooping leaves. It may be necessary to water daily under these circumstances.
- The best thing to do is test the soil around the roots of the plants to see if they need to be watered. You want to avoid over-watering and saturating the soil. The soil should be moist, not dripping wet. After the first month, water less frequently unless the soil is drying out or if there is no natural precipitation. New plantings up to a year old generally need about an inch of water each week.
- Perennials need to be watered every other day until established. Every day in hot weather.
- Shrubs should be watered two or three times per week for the first year. Most new tree and shrub transplants that are properly planted in well-drained soil require about one inch of water per week to become established.
- Trees need to be watered slowly over the first and second years. Use a slow soaker hose or drip method to allow the water to percolate through the soil instead of running off the top. After planting, the roots of trees will eventually spread into surrounding soil. Until then, trees continue to draw water mostly from their root ball. Smaller trees and shrubs establish more quickly than larger trees. 



Pool patio in Natural Cleft Bluestone
with coordinating coping. Stepping stones
with artificial turf. Patio with Full Color
Bluestone. Guilford, Conn. (2020)

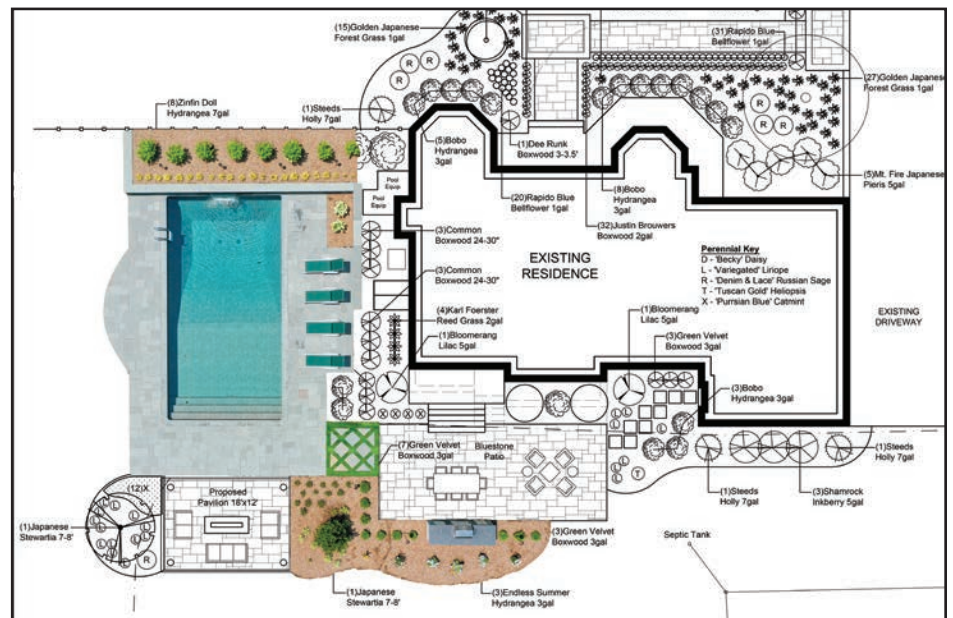


IT ALL STARTS WITH A PLAN

The Benefits of Working with a Landscape Architect

Every great outdoor living space starts with a plan. At least, this is how Brian Murphy, Landscape Architect at Torrison Stone & Garden, sees it.

Long before the sod is rolled out and the polymeric sand is smoothed over the paver joints, Brian takes the client's wish list, applies his creative vision and designs a one-of-a-kind plan that, more often than not, exceeds their expectations.



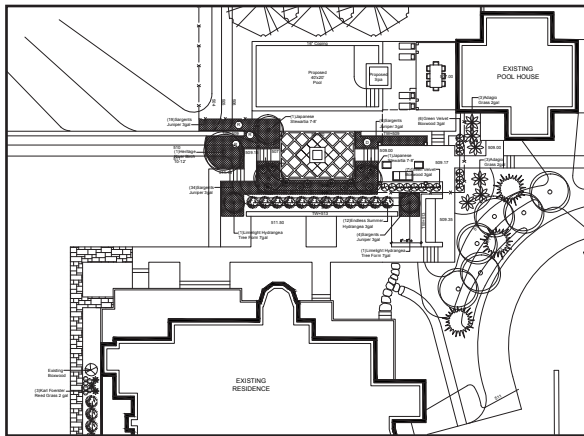
A UConn graduate, Brian is a licensed landscape architect and a Connecticut Accredited Nursery Professional. His first job after graduation was in a Fairfield County firm for four years. The experience taught him that his passion was in seeing his projects through to the build phase, rather than just simply creating designs. "You don't necessarily see what you do as much when you're not installing it," he explained. "There's a satisfaction in actually seeing a project come full circle." Brian worked for a design build company for 11 years before he crossed paths with Tyler Gerry. The two started working together on a few projects, and officially joined forces in 2015. Torrison Garden was launched that year, and Brian Murphy, along with Suzanne Carlson Zengel, became managing partners of this new division.

Brian's 3D designs and professional architectural plans have become an important part of Torrison's repertoire of services. His designs have successfully propelled the company into a whole new league in terms of the scope and size of its projects. This became apparent in 2017 when Torrison won the bid to revitalize Middletown's Palmer Field sports complex - an 8-month, all-hands-on-deck

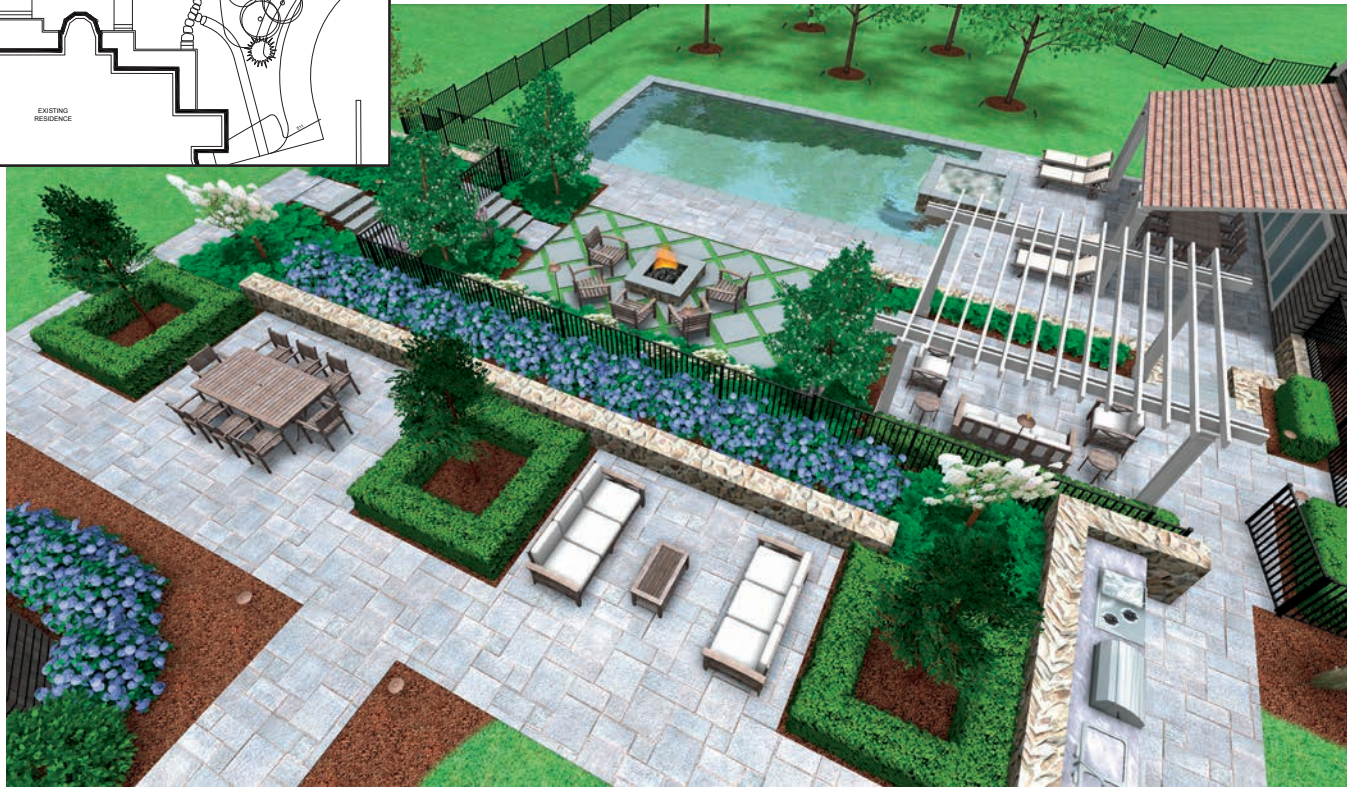
continued > 9

Scan code to see a
video of this project!





“There’s a satisfaction in actually seeing a project come full circle.”
Brian Murphy, PLA



project, the company’s largest to date. But, when asked, Brian’s favorite projects are the ones a little closer to home - residential backyards where his clients spend their quality time with friends and family. “I like creating spaces that people are going to be able to relax in and enjoy. There are so many cool things that we are now putting into these outdoor spaces, from pavilions and pergolas to kitchens and fire features,” he said.

At Torrison, the design process always begins with a site visit. A landscape architect will take measurements and photos and discuss the client’s vision for their project at this first meeting. It’s helpful for the client to have information such as zoning setbacks, as-built survey maps, septic and well as-built maps and a budget.

The next step is an appointment at our showroom in Durham. “For some clients, this is their first visit to our showroom. “It’s always fun to get them here to really show them what we can do in person with the outdoor showroom, and have the opportunity to present their design in a more formal way.” In addition to a straight forward black and white site plan, Torrison’s landscape architects are able to bring your custom design to life with a 3D rendering. Clients can experience their projects in a way that incorporates all stone and landscape elements - right down to seasonal changes of their proposed garden plantings.

Brian explains that listening to what the client is saying (and sometimes what they are not saying) is extremely important to the design process. “Sometimes you have to take chances as far as



continued >

your design goes,” explains Brian. “I had one client hand me a sketch of what he was thinking. It was just a very loose amoeba patio, it really had no formal structure.” Brian explained that while the man was showing him this sketch, what he was explaining to Brian was completely different. “So I kind of went out on a limb and designed something a lot more formal,” said Brian. “It had curves, obviously, because I think the curves were an important piece to him, he just didn’t know how to execute them.” That’s where Brian’s expertise and talent come into play. The client ended up being very pleased with the design. “It was actually a really cool project,” he says. “Easily one of the most enjoyable projects I’ve had the pleasure of working on.”

A third and final design meeting may happen at the showroom again, or at the client’s property. This is when design revisions are addressed and materials, appliances and features are finalized. This is also when the landscape architect will usually address the project timeline and outline of the work schedule. Many times, a stone project manager will be at this meeting to review the elements of the project that will involve his masons and crew.

Torrison customers find that working with a landscape architect is the best way to pull together a variety of project elements into one seamless design that blends utility and aesthetic. We want to help bring your creative vision to life! 🌿



Scan code to see a
video of this project!



WHAT TO EXPECT TSG DESIGN PROCESS



Torrison Stone & Garden goes above and beyond to match your personal style and stay within your budget. We reveal the unique personality and character of each client. Our relaxed approach, creative eye, and attention to detail result in projects that will be treasured for years! Follow along and see what to expect when working with our architects!



DESIGN MEETING 1

Schedule a Site Visit with one of our Landscape Architects to discuss your vision and take measurements for your future project.

CUSTOMERS MUST HAVE THE FOLLOWING INFORMATION PRIOR TO THEIR 1ST MEETING:

1. Property Card with Zoning Districts & Setbacks
2. As-Built Survey Map of Project Property
3. Septic & Well As-Built Maps
4. Any Photos, Materials, Layouts, or Design Features Wanted In Design
5. Budget Guidelines to Stay Within

DESIGN MEETING 2

Join your Architect at Torrison Stone & Garden to:

- Review design, project budget, projected schedule, timeline and schedule of values
- Tour TSG Showrooms to review selected materials
- Provide feedback on overall project to incorporate into final design



DESIGN MEETING 3

This **final** design meeting will either be at TSG or on the project site and will consist of the following:

- Review of any changes made from meeting #2
 - Confirmation of material choices, appliances, and design features
 - Project timeline and outline of project work schedule
 - Final budget and schedule of values (outline of payment structure for project)
- Torrison Stone & Garden provides designs *without* charging an upfront design fee.
- Torrison Stone & Garden allows clients to have *prints, copies, or photos* of their design **AFTER** they have made a deposit on the project.
- Torrison Stone & Garden will provide a *detailed proposal* based upon the final design.
- Changes to the design after a deposit is made will be billed at **\$150.00 an hour**.
- All costs associated with permitting including, but not limited to, permit fees, design prints, and design modifications will be passed along to the client.





NATURAL STONE VENEER

A Variety of Applications

Nothing offers the perfect balance between durability and timeless character quite like natural stone veneer. It's a great option for a distinctive look with various practical applications for your home's interior or exterior.

Torrison uses stone veneer for:

- 🌿 Foundations
- 🌿 Siding
- 🌿 Interior Accent Walls
- 🌿 Fireplace Surrounds
- 🌿 Step Risers
- 🌿 Outdoor Kitchens
- 🌿 Pillars
- 🌿 Chimneys

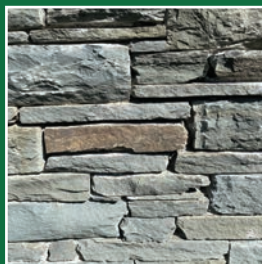


VENEER STYLE GUIDE

Ashlar
Liberty Hill Granite



Ledge
Colonial Stone



Round/Mosaic
Round Fieldstone



Square & Rec
Boston Blend Granite



SEEDED OR SODDED

Step-by-Step Guide for Success

The best advice for watering new grass seed is both simple and complicated. The most crucial time is between when the grass seed is laid and germination, which occurs within the next 5-30 days depending on variety and climate. The most important thing during this time is to keep the top 1-inch of soil moist but not over-saturated. Here are some easy steps to follow for grass seed care:

Step 1: Irrigate the soil daily at least twice a day, but possibly more. Try not to let the soil completely dry out. If your seed is planted in bare soil, do not soak or flood your lawn. When watering a new lawn, use just enough water to keep the soil moist at seed depth. Standing water or prolonged heavy rain could ruin some of the seed or possibly wash the seed away. Be careful about watering grass late in the evening or at night, especially with high humidity. This creates a problem with the lawn staying damp for too long, which can lead to disease.

Step 2: Once the seed has sprouted, continue watering lightly, but allow the soil to dry slightly before watering again. At the seedling stage, it is even more critical not to repeatedly saturate the soil.

Step 3: When the grass is a couple inches

tall, cut back on water to once every two to three days, depending on the temperature. Tiny seedlings can still suffer if the temperature spikes and the soil dries out. Soil dries faster in hot, arid environments than humid environments.

Step 4: Once the grass reaches a cutting height (Approx. 3-3.5" and firm ground), begin watering deeply, but less often, so the soil is wet to a depth of four inches. Once root growth is established, less frequent and deeper watering will promote deeper root growth.





For newly laid sod, consider these instructions to ensure the success of the installation:

Days 1-10: Water each day for at least 15-20 minutes in each area of the lawn. Watering a second time each day is

recommended if the temperatures are over 65 and sunny. It is important to get the water through the sod and into the soil below the sod. Check to make sure you are watering enough by pulling back the corner of the sod in several places throughout the lawn to make sure the soil below is moist. Do not fertilize or mow the lawn yet. You may walk on the lawn to move sprinklers, but keep non-essential foot traffic to an absolute minimum during the initial establishment period.


Days 10-21: Water every other day for approximately 30 minutes. Check to make sure you are watering enough by pulling back the corner of the sod in several places throughout the lawn to make sure the soil is moist. The sod should be difficult to pull up – do not force it up. The root system is

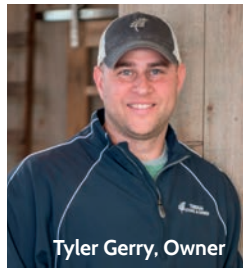
Important Notes

-  Sod installation requires diligent watering for longer periods of time to get roots to establish in the turf.
-  Make spot weed control applications as needed, no sooner than 10 weeks from installation date.
-  Use pesticides sparingly and only as needed.
-  Apply fertilizer at half the normal rate in shady lawn areas.
-  Aerating at least once per year is good, twice per year is preferable.



establishing and should not be pulled from the soil. Just tug lightly to assure good rooting. If the lawn is not rooting, you may not be watering enough. Before watering the lawn, cut the grass as needed. Do not remove more than a third of the grass plant at one time while cutting – keeping the lawn at 2.75" to 3.5" in height. Do not water the lawn one to two days preceding lawn mowing. Continue watering cycle after first cut. Do not apply fertilizer to the lawn yet.

Three weeks and beyond: You may begin to cut the lawn as needed. The lawn should be fairly well-rooted and can take normal wear and tear. 



Tyler Gerry, Owner

Since 2000, Owner Tyler Gerry has grown Torrison Stone & Garden from a one-crew operation to a company with over 100 employees.

Here's what sets our company apart from the competition:

- 🌿 Exceptional Showrooms
- 🌿 Licensed Landscape Architect
- 🌿 Technology
- 🌿 Industry Recognition/Awards
- 🌿 Quality Materials
- 🌿 Expert Crews
- 🌿 Rock Star Staff
- 🌿 Member Network
- 🌿 Community

Torrison's reputation is built every day and through each customer interaction - from the initial visit to our office to the day the crews leave your property. We are honored to be considered for your next project.





Porcelain stepping stones in artificial turf. Guilford, Conn.



Paver patio with granite cobblestone inlay. Natural boulder firepit. Durham, Conn.





Travertine pool patio. Woodbury, Conn.



Paver driveway with granite cobblestone edging. Natural fieldstone wall with bluestone cap. Madison, Conn.

Scan here to see more
amazing Torrison projects!





Powerwashing can be done any time of year and will keep pavers and natural stone looking clean and new!

CLEAN PATIOS ARE HAPPY PATIOS

Three Steps to Increase the Longevity of Your Outdoor Stone Surfaces

Stone is one of the most durable choices you can make for your home's outdoor living spaces, and regular maintenance will keep it looking great for years to come. Maintaining your walkways, steps and patios is as easy as making sure these three steps are routinely addressed over their lifetime.

1 Powerwashing

Oftentimes, patios and other stone surfaces can become overwhelmed by algae or moss, especially in shady areas. Build-up on stone and in the joints is not uncommon in our New England climate. Powerwashing is a simple solution for keeping these elements at bay and, many times, is exactly what customers need to give their stone surfaces an instant facelift, whether it be seasonally, every couple of years or prior to a larger maintenance project.

continued >



2 Polysand Application

Polymeric sand is commonly spread into the joints between natural stone and pavers. The perfect finishing touch, polymeric sand creates a semi-permeable jointing barrier that allows for slight shifting of the stone during seasonal transitions. Though it varies based on each location's exposure to the elements, polymeric sand needs to be replaced and re-touched every 3-4 years.

3 Repointing, Repair and Resetting

Occasionally, stones shift or crack and need a little extra TLC. Fortunately, these materials are usually fairly easily repaired, replace or reset without compromising the integrity of the entire structure. A talented mason will be able to easily identify issues and offer appropriate solutions. Sometimes small repairs can have great impact on the overall look of your stone surfaces!

Protect your investment with routine maintenance for all your home's stone features – indoors and outside! Call Torrison to get a free estimate for your next maintenance project. 🌿



Patio Plus Maintenance

Sometimes all it takes is a little TLC to restore stone surfaces to their former glory! Protect your investment with these services:

🌿 Deep Cleaning

🌿 Powerwashing

🌿 Repair & Resetting

🌿 Polymeric Sand

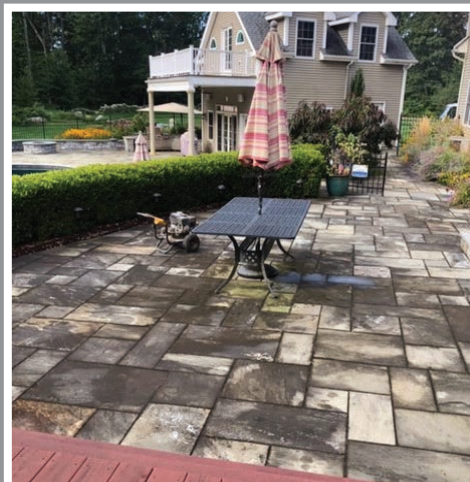
🌿 Repointing Cracks

🌿 Rejointing Walls

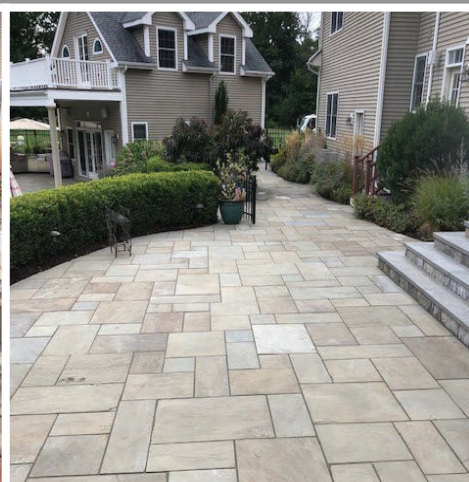
🌿 Removal of Weeds/Moss/Algae

🌿 Follow Up Work and More!

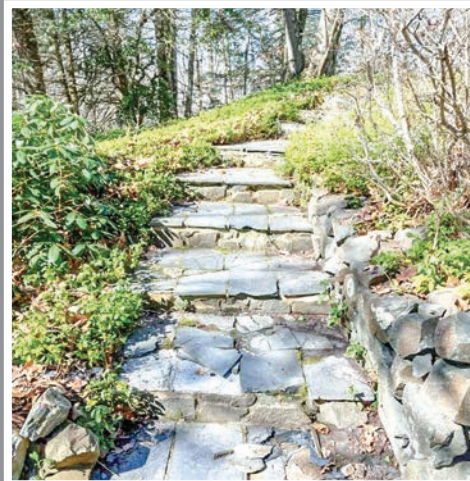
Before



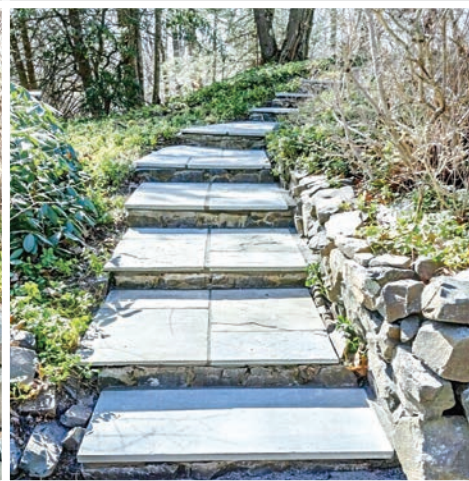
After



Before



After



Before



After





SHOWROOMS

Our indoor and outdoor showrooms are unlike anything in the Northeast. A destination experience, clients and visitors can see practical applications of hundreds of different products and materials in one space.

Guests are encouraged to tour the showroom and experience our products while also admiring the craftsmanship that has made us an industry leader.



EVENTS

Each of our unique showrooms - The Outdoor Showroom, The Fire Room and the Tap Room - all available to reserve for small corporate functions. Host your next meeting, workshop, retirement party, happy hour or networking event at Torrison! Contact us for more information about Torrison Events.



The Tap Room is an auxiliary space used for company meetings and after-hours events not limited to Torrison - the space is available to rent for small corporate meetings and social events!



The Fire Room is our newest showroom, offering a display of the latest in indoor stone veneer and fireplace inspirations.

Our 10,000-square-foot Outdoor Showroom was built in 2019 to display our best selling materials in a way that unites form and function.



Virtual Showroom
Tour!





A HOME RUN FOR TORRISON



Palmer Field, Middletown

Tucked back behind Route 66 Washington Street in Middletown is the Palmer Field sports complex, home to American Legion Post 75 team as well as Xavier High School. For Torrison, Palmer also hails as the company's most extensive project to date. Torrison won the bid to transform the 40-year-old ballfield in 2017, after the city of Middletown passed a multi-million dollar bond to transform several of its recreational areas.

Landscape Architect Brian Murphy designed the space with the feel of a traditional New England baseball stadium. A tree-lined courtyard in red brick mixed with gray pavers in a square grid pattern complements the green and brick sided buildings to create a cohesive gathering space with character. Over the course of 10 months, Torrison worked collaboratively with subcontractors, municipal officials and engineers to transform the stadium.



The park's entrance immediately welcomes visitors with a beautiful sign atop custom pillars and a paver patio with an eye-catching baseball inlay. Within the concession area, a raised bed shaped like a baseball diamond features plantings selected to put on a show all season long.

Palmer Field will forever go down in Torrison's history as an amazing project that really demonstrated the company's capabilities and solidified its position as an industry leader. 🌿

BEFORE & AFTER

Torrison Transformations

- 1 **Branford, Conn.** - Simple inground pool gets an upgrade with multi-level travertine patio, spillover spa, gas firepit and outdoor kitchen.
- 2 **Guilford, Conn.** - Natural cleft bluestone pool deck and retaining wall with spillways connect to an outdoor dining area by a stepping stone walkway with artificial turf.
- 3 **Goshen, Conn.** - Full color bluestone, tiered patio. Natural stone steps.
- 4 **Haddam, Conn.** - Natural stone veneer in Boston Blend (ashlar cut) to extend the fireplace surround to the ceiling.

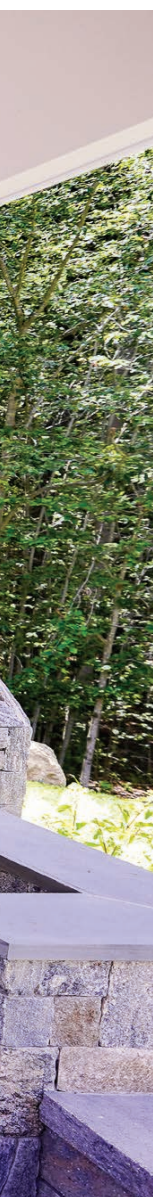




Natural cleft bluestone patio, granite veneer and leathered granite countertop on grill island. Glastonbury, Conn.



Paver patio, natural granite veneer on fireplace. Block wall for bar with leathered granite countertop. Guilford, Conn.





Paver pool patio and coping, spa wall and architectural caps .
Middletown, Conn.



Linear gas firepit. Thermal
bluestone wall cap. Clinton, Conn.





Paver patio with decorative inlay. Architectural seat wall and caps. Cheshire, Conn.



Bluestone pool patio and coping. Natural granite veneer walls. Bluestone treads and caps. Glastonbury, Conn.



CUSTOMER TESTIMONIALS

“We could not be more pleased with the work that the Torrison Stone & Garden team did to create the perfect outdoor living space for our family! From the very first consultation, our Project Manager understood our vision and provided us with options to suit our lifestyle and budget. Throughout the process, the team arrived early in the morning and worked tirelessly throughout the day. At the end of each work day, our property was swept clean which helped prevent the dirt and debris from entering the inside of our home. We were so delighted with the fireplace that we also had the team design a stone area for our driveway which we are very happy with. We’re now enjoying our beautiful and masterfully constructed fireplace and all the compliments that have come with it! Thank you Torrison Stone & Garden.”

– Michael and Laura, Old Lyme

“I want to thank you both for all your help in completing my firepit conversion to gas project. I began this project with a local stone company to try and support our local businesses, but it quickly turned into a nightmare in dealing with them. I deeply appreciate Torrison Stone stepping in and completing the project in a timely and professional manner. Even though this project went way over the budget that I had planned for, it was no fault of yours. I have high praise for the two masons assigned to this job. They are very hard workers, and extremely polite and capable. They did a great job! In the future, I will only use Torrison for any further outdoor needs, and will be recommending your company to clients and friends. Thank you again!”

– Deb, Killingworth

““We at Seaview thank you for our beautiful new walkway! It has dramatically improved the aesthetic ‘face’ of our community and helped to increase property values. The end result far exceeded our expectations. Not only did you fulfill your contract to our complete satisfaction, you were on site to answer our questions and make us feel that we were in competent hands. Your crew was skilled, hardworking and polite. Please add Seaview Condo Association to your list of happy and satisfied clients.”

– Nancy, President & Dodie
Grounds Committee Chair at Seaview Condo

“We want to express what a great experience we have had with our backyard project thanks to every single person at Torrison Stone and Garden. As local personal business owners, we like to support other locally owned businesses. Everyone, including the office staff at Torrison Stone and Garden made our project run smoothly and ahead of schedule. This project has been about four years in the making, and we could not be happier with the outcome!!! All of the very talented masons worked diligently to ensure our ideas were kept in mind, and have excellent attention to detail and great pride in their work, which shows. It is refreshing to work with such great people at Torrison Stone and Garden, we really appreciate everyone’s hard work and their pride in their work, which is extremely important to us. We would like to invite you to our home to see how incredibly your teams have transformed our backyard. You may want to consider using our backyard photo as a featured project on your website. ‘Zivjeli!’ (Cheers in Croatian).”

– Christin and Scott, Wallingford

MY PROJECT

TORRISON PLANNER & NOTES



PROJECT SCHEDULE

STEP 1	INITIAL ON-SITE APPOINTMENT
STEP 2	WRITTEN PROPOSAL EMAILED
STEP 3	SCHEDULE SHOWROOM APPOINTMENT DATE/TIME: _____
STEP 4	MATERIAL SELECTIONS FINALIZED
STEP 5	PROPOSAL ACCEPTED INITIAL DEPOSIT MADE
STEP 6	PROJECT START DATE!
STEP 7	PM FOLLOW UP/FINAL INVOICE DUE
STEP 8	CUSTOMERS FOR LIFE FOLLOW UP



PROJECTS INVOLVING ONE OF OUR LANDSCAPE ARCHITECTS FOLLOW A SLIGHTLY DIFFERENT SCHEDULE - ASK YOUR SHOWROOM ASSOCIATE FOR DETAILS!

APPOINTMENT:

PROJECT MANAGER:

MATERIALS I LIKE

TO DO LIST

MEMBER NETWORK REFERRALS

NOTES ...



TORRISON
STONE & GARDEN
Your Connection To Outdoor Living



422 Main Street, Durham, CT 06422
torrisonstone.com 🌿 info@torrisonstone.com
860.349.0119

